

WEST YORKSHIRE SPINNERS

OUT OF THE  
*Woods*

OPHELIA FAIR ISLE CARDIGAN  
BY EMMA WRIGHT

**DESIGNS:** Emma Wright

**COPYRIGHT:** The knitwear designs in this pattern are copyrighted and must not be knitted for resale.

Reproduction of this pattern is protected by copyright and sold on the condition that it is used for non-commercial purposes. No part of this pattern may be reproduced for resale.

WEST  
YORKSHIRE  
SPINNERS





< >

# OUT OF THE *Woods*

'Out Of The Woods' is a collection of designs which combines the solid & natural shades of the Illustrious colour palette; inspired by a nostalgic craving for those intuitive outdoor explorations into nature.



WEST YORKSHIRE SPINNERS  
**ILLUSTRIOUS**  
100% FALGAND WOOL 30% BRITISH ALPACA  
WWW.WYSPINNERS.COM

WEST YORKSHIRE SPINNERS  
**ILLUSTRIOUS**  
100% FALGAND WOOL 30% BRITISH ALPACA  
WWW.WYSPINNERS.COM

WEST YORKSHIRE SPINNERS  
**ILLUSTRIOUS**  
100% FALGAND WOOL 30% BRITISH ALPACA  
WWW.WYSPINNERS.COM

WEST YORKSHIRE SPINNERS  
**ILLUSTRIOUS**  
100% FALGAND WOOL 30% BRITISH ALPACA  
WWW.WYSPINNERS.COM

WEST YORKSHIRE SPINNERS  
**ILLUSTRIOUS**  
100% FALGAND WOOL 30% BRITISH ALPACA  
WWW.WYSPINNERS.COM

WEST YORKSHIRE SPINNERS  
**ILLUSTRIOUS**  
100% FALGAND WOOL 30% BRITISH ALPACA  
WWW.WYSPINNERS.COM

WEST YORKSHIRE SPINNERS  
**ILLUSTRIOUS**  
100% FALGAND WOOL 30% BRITISH ALPACA  
WWW.WYSPINNERS.COM

WEST YORKSHIRE SPINNERS  
**ILLUSTRIOUS**  
100% FALGAND WOOL 30% BRITISH ALPACA  
WWW.WYSPINNERS.COM

WEST YORKSHIRE SPINNERS  
**ILLUSTRIOUS**  
100% FALGAND WOOL 30% BRITISH ALPACA  
WWW.WYSPINNERS.COM

WEST YORKSHIRE SPINNERS  
**ILLUSTRIOUS**  
100% FALGAND WOOL 30% BRITISH ALPACA  
WWW.WYSPINNERS.COM

WEST YORKSHIRE SPINNERS  
**ILLUSTRIOUS**  
100% FALGAND WOOL 30% BRITISH ALPACA  
WWW.WYSPINNERS.COM

WEST YORKSHIRE SPINNERS  
**ILLUSTRIOUS**  
100% FALGAND WOOL 30% BRITISH ALPACA  
WWW.WYSPINNERS.COM


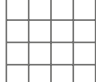
# ILLUSTRIOUS

70% FALKLAND WOOL 30% BRITISH ALPACA

Illustrious is a blend of pure, unadulterated Falkland Islands wool with the finest British Alpaca. Falkland wool is the perfect companion to the UK reared Alpaca. The increased length of the fibre envelopes or wraps round the Alpaca, preventing an abundance of surface fibre and hairiness.

The colours in this range were selected to inspire and excite. We invested our time ensuring that the shades not only worked well individually but also in harmony with each other. Finally, we used our technology to create subtle, variegated combinations which complete this stunning collection.

70% FALKLAND WOOL  
30% BRITISH ALPACA

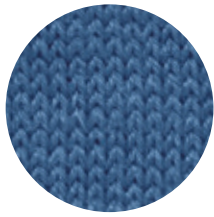
TENSION 10cm/4" sq	 4mm US6	225
		METRES
28 TOWS  22sts	100G BALL	245
		YARDS



Do not tumble dry  
Reshape whilst damp



Mulberry  
765



Royal  
174



Ocean  
807



Highland  
331



Fern  
344



Antique Gold  
203



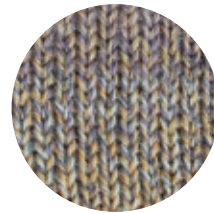
Claret  
508



Garnet  
594



Heather  
828



Lichen  
826



Old Lace  
010

# ILLUSTRIOUS

70% FALKLAND WOOL 30% BRITISH ALPACA

## NATURALS

A collection of six completely natural shades combining pure unadulterated Falkland Island wool with the finest British Alpaca. This stunning colour palette was achieved by using the beautiful natural tones of British Alpaca fleece.

70% FALKLAND WOOL  
30% BRITISH ALPACA

TENSION  
10cm/4" sq  
28 rows  
22sts

4mm  
US6

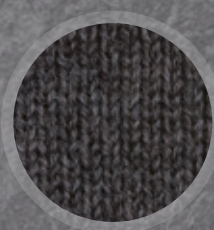
225  
METRES

100G  
BALL

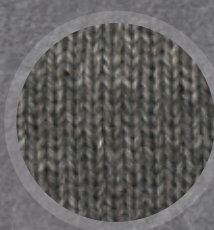
245  
YARDS



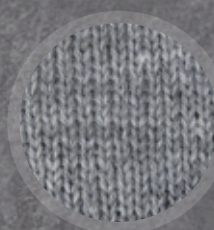
Do not tumble dry  
Reshape whilst damp



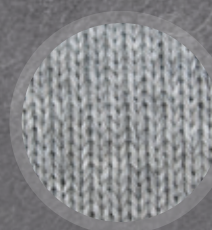
Graphite  
037



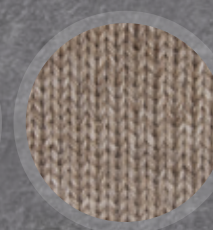
Pewter  
838



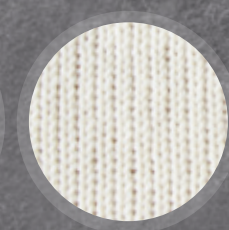
Slate  
036



Pebble  
034



Shale  
035



Old Lace  
010



# Emma Wright

Emma Wrights AW18-19 collection of designs combine the new rich jewel like shades with the existing range of solid & natural colours. Cable textures, peplum shaping, basic & complex colour-work pieces create a fashionable collection of everyday luxury knitwear. Out of the Woods is a concept that developed from the colour palette and was influenced by a nostalgic craving for those intuitive outdoor explorations into nature. Venture into your creativity with this collection of 4 alluring garments & 3 beautiful accessory sets.

## GENERAL INFO

### TENSION

It is essential to work to the stated tension in order to achieve the desired fabric and garment size, you should always start by knitting a tension square before knitting the full garment.

If you have fewer stitches than stated you will need to go down needle sizes until the correct tension is achieved and if you have more you will need to go up needle sizes. Please check individual patterns for tension before starting the garment.

### WORKING FROM A CHART

When working from a chart you will read all right side rows from right to left and wrong side rows from left to right.

### FINISHING

We recommend using mattress stitch for seaming your garment. When sewing in a raglan sleeve you will match row for row. When sewing in a semi set in sleeve you need to pin the sleeve in position matching the centre of the sleeve cast off to the shoulder of the body, you will then ease the sleeve into the armhole.

Once your garment is completed it is essential to block your knitting. Pin your garment out to the size stated in the pattern. Cover with damp cloths and leave until dry.

## WASHING INSTRUCTIONS



Do not tumble dry  
Reshape whilst damp

## ABBREVIATIONS

<b>alt</b>	alternate
<b>beg</b>	beginning
<b>cm</b>	centimetres
<b>cont</b>	continue
<b>dec</b>	decrease(ing)
<b>foll</b>	follow(ing)
<b>folls</b>	follows
<b>g-st</b>	garter stitch (every row knit)
<b>g</b>	grammes
<b>in</b>	inch(es)
<b>Kbf</b>	knit into back and front
<b>K</b>	knit
<b>K2tog</b>	knit 2 sts together
<b>K3tog</b>	knit 3 sts together
<b>mm</b>	millimetres
<b>patt</b>	pattern
<b>patt2tog</b>	Pattern 2 sts together
<b>patt2togtbl</b>	pattern 2 sts together through back of loop
<b>P</b>	purl
<b>P2tog</b>	purl 2 sts together
<b>pssso</b>	pass slipped stitch over
<b>rep</b>	repeat
<b>rem</b>	remain(ing)
<b>rs</b>	right side
<b>st(s)</b>	stitch(es)
<b>sl1</b>	slip 1 stitch
<b>sl2p</b>	Slip 2 sts purl-wise
<b>st-st</b>	stocking stitch (1 row knit, 1 row purl)
<b>tbl</b>	through back of loop
<b>tog</b>	together
<b>ws</b>	wrong side
<b>yb</b>	yarn back
<b>yfwd</b>	yarn forward
<b>yrn</b>	yarn round needle





# Aphelia

## FAIRISLE CARDIGAN

SKILL LEVEL



## MEASUREMENTS

### To Fit Bust

in	32/34	36/38	40/42	44/46	48/50
cm	81/86	91/97	102/107	112/117	122/127

### Actual Size

cm	101	110	123	134	141
----	-----	-----	-----	-----	-----

### Full Length (approximately)

cm	82	84	86	88	89
----	----	----	----	----	----

### Sleeve Length

cm	46	46	47	48	48
----	----	----	----	----	----

Model wears first size (to fit bust 81/86 cm)

## MATERIALS

### YARN

West Yorkshire Spinners - Illustrious DK

A	Ocean (807)	5[5:6:6:7] x 100g balls
B	Fern (344)	1 x 100g balls
C	Royal (174)	1 x 100g balls
D	Dusky Lilac (704)	1 x 100g balls
E	Claret (508)	1 x 100g balls

### NEEDLES

4mm (US 6/UK 8) Circular needle

1 Pair 4mm (US 6/UK 8) knitting needles

1 Large stitch holder

## TENSION

26 sts and 24 rows to 10cm measured over fairisle and 22 sts and 30 rows to 10cm measured over linen stitch on 4mm needles or size needed to achieve stated tension. It is important to follow the blocking instructions given below.

PLEASE CHECK YOUR TENSION AS IT IS ESSENTIAL TO ACHIEVE THIS TENSION IN ORDER TO ACHIEVE SUCCESS.

## SPECIAL ABBREVIATION

M1 - Make one stitch. Pick up loop between last and next stitch and work into back of this loop.

## PATTERN NOTE

1. When placing Chart A work from left to right beginning with a WS row and work first st and then work 12 st repeat within red border only as written in the pattern.
2. When placing Chart B work from right to left beginning with a RS row and work 12 st repeat within red border only and then work last st as written in the pattern.

## SPECIAL NOTES

### WORKING FROM A CHART

When working from a chart you will read all right side rows from right to left and all wrong side rows from left to right.

### FAIR ISLE

When working in more than 1 colour, the colour not in use should be stranded loosely across back of work and woven in where necessary to retain elasticity of fabric.



## BACK AND FRONTS

(Worked in one piece to armholes)

Using 4mm circular needles and C, cast on 222 [244:266:290:312] sts and knit 4 rows.

**Next row (RS):** K6 [12:18:29:6], m1, (k5 [5:5:4:5] m1) 42 [44:46:58:60] times, k6 [12:18:29:6]. 265 [289:313:349:373] sts.

**SEE CHART A** (See patt note)

**Row 1 (WS):** Using B, purl.

**Row 2:** Using B, knit.

**Row 3 (WS):** P1D, \* p1C, p2D, p5C, p2D, p1C, p1D, rep from \* to end.

**Row 4:** \* K2D, k1C, k2D, k3C, k2D, k1C, k1D, rep from \* to last st, k1D.

These 4 rows set chart A.

Cont as set working from chart A until all 71 rows have been worked, ending with RS facing for next row.

**SEE CHART B**

**Row 1 (RS):** Using E, knit.

**Row 2:** Using E, purl.

**Row 3 (RS):** \* K1B, K1D, k2B, k5D, k2B, k1D, rep from \* to last st, k1B.

**Row 4:** P1B, \* p1B, p1D, p2B, p3D, p2B, p1D, p2B, rep from \* end.

These 4 rows set Chart B.

Cont as set working from chart B until all 71 rows are completed, ending with a **WS** facing for next row.

Break off A, B, C and D.

**Next row (WS):** Using E, purl.

**Next row:** Using E, k2 [14:5:8:0], (k2tog) 1 [1:1:1:2] times, (k4 [4:5:4:4], k2tog) 43 [43:43:55:61] times, (k2tog) 0 [0:0:0:1] times, k3 [15:5:9:1].

221 [245:269:293:309] sts.

Break off E and using A only (throughout) proceed as follows:-

**Next row (WS):** purl.

**Row 1 (RS):** K1, \* yfwd, sl1p, yb, k1, rep from \* to end.

**Row 2:** Purl.

**Row 3:** K2, \* yfwd, sl1p, yb, k1, rep from \* to last st, k1.

**Row 4:** Purl.

Last 4 rows set linen st.

Work 4 rows more.

**Divide for Armholes**

**Next row:** Patt 55 [61:67:73:77] sts, turn, leaving rem 166 [184:202:220:232] sts on a large stitch holder.

**Right front**

**Next row:** Using E, k2 [9:14:15:2], k2tog, (k4, k2tog) 43 [45:47:53:61] times, k3 [8:15:14:3].

221 [243:265:295:311] sts.

On these 55 [61:67:73:77] sts, cont without shaping until armhole measures 19 [21:23:25:26] cm, ending with RS facing for next row.

Cast off.

**Back**

With RS facing, rejoin A to rem 166 [184:202:220:232] sts, patt 111 [123:135:147:155] sts, turn leaving rem 55 [61:67:73:77] sts on stitch holder.

Working on these 111 [123:135:147:155] sts, cont without shaping until armholes measure 19 [21:23:25:26] cm, ending with RS facing for next row.

Cast off.

**Left front**

With RS facing, rejoin A to rem 55 [61:67:73:77] sts, patt to end.

Cont without shaping until armhole measures 19 [21:23:25:26] cm, ending with RS facing for next row.

Cast off.

## SLEEVES (BOTH ALIKE)

Using 4mm needles and C, cast on 42 [46:46:50:54] sts.

**Next row (RS):** K2, \* p2, k2, rep from \* to end.

Break off C, join in A.

**Row 1 (WS):** P2, \* k2, p2, rep from \* to end.

**Row 2:** K2, \* p2, k2, rep from \* to end.

These 2 rows set rib.

Work 8 rows more, ending with **WS** facing for next row.

**Next row (WS):** Purl to end, inc 1 st at centre of row. 43 [47:47:51:55] sts.

**Row 1 (RS):** K1, \* yfwd, sl1p, yb, k1, rep from \* to end.

**Row 2:** Purl.

**Row 3:** K2, \* yfwd, sl1p, yb, k1, rep from \* to last st, k1.

**Row 4:** Purl.

Last 4 rows set linen st.

Cont in linen st (throughout) inc 1 st at each end of next and every foll 6th [5th:4th:4th:4th] row to 83 [93:101:111:115] sts, working increased sts into patt.

Cont without shaping until sleeve measures 46 [46:47:48:48] cm, ending with RS facing for next row.

Cast off.

## FRONT BORDER

Fold fronts to meet in middle across back cast off seam and join shoulder seams.

With RS facing, using 4mm circular needle and A, pick up and knit 181 [185:189:193:197] sts evenly up right front edge to centre back neck point and knit 181 [185:189:193:197] sts evenly down left front edge. 362 [370:378:386:394] sts.

**Next row (WS):** P2, \* k2, p2, rep from \* to end.

**Next row:** K2, \* p2, k2, rep from \* to end.

Rep these 2 rows 3 times more.

Cast off in rib.

## MAKING UP

Fold sleeves in half and matching fold to shoulder seam, sew sleeves in position. Join sleeve seams.

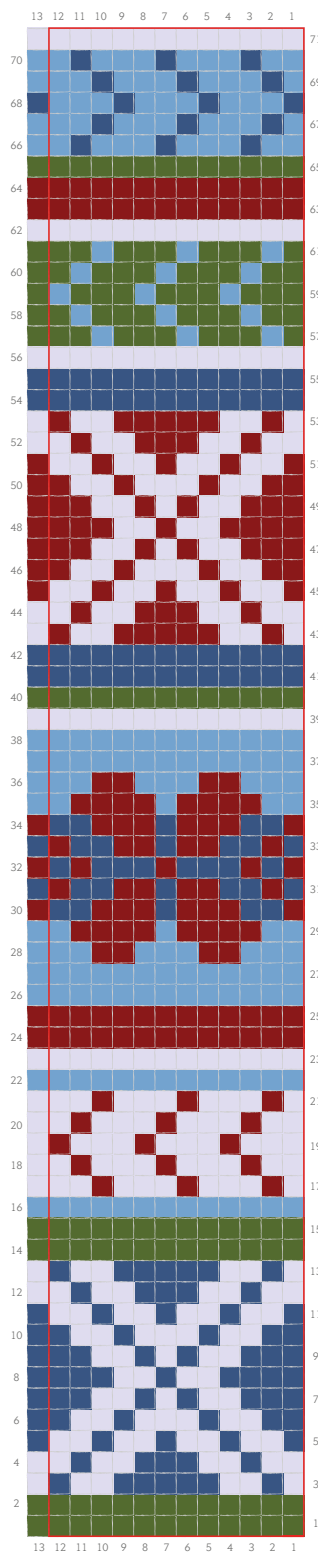
### BLOCKING

Pin to measurements stated above, cover with damp cloths and leave to dry.

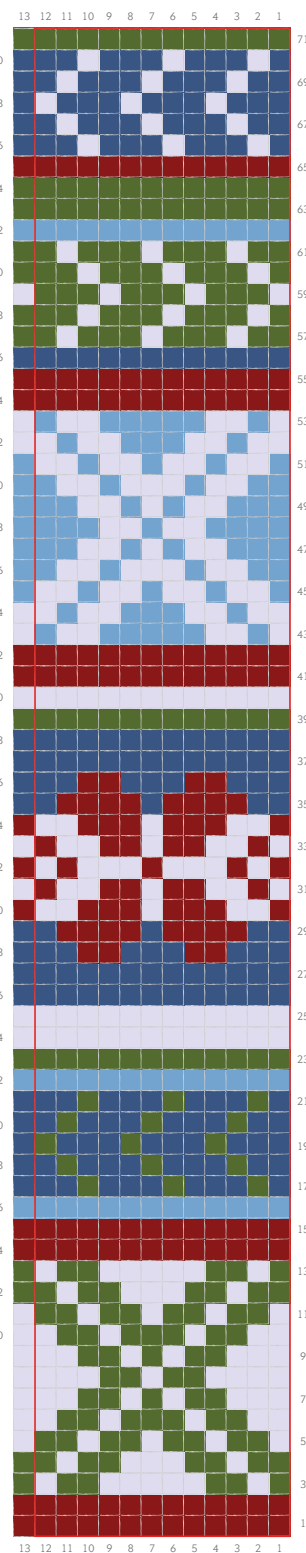
### KEY

-  RS: Knit  
WS: Purl
-  A Ocean (807)
-  B Fern (344)
-  C Royal (174)
-  D Dusky Lilac (704)
-  E Claret (508)
-  12 st patt rep

## CHART A



## CHART B



## DISCLAIMER

---

Please note that all quantities in this pattern are based on average usage and therefore are approximate. We cannot accept responsibility for the finished garment if any other yarn than the one specified is used.

Although every effort has been made to ensure that instructions are correct, West Yorkshire Spinners cannot accept any liabilities. Owing to photography and printing restrictions the colour reproduction is matched as closely as possible to the yarn.

## CONTACT INFORMATION

---

West Yorkshire Spinners  
Unit 2, Airedale Park, Royd Ings Avenue,  
Keighley, West Yorkshire BD21 4DG

[www.wyspinners.com](http://www.wyspinners.com)  
(0)1535 664500  
[sales@wyspinners.com](mailto:sales@wyspinners.com)

WWW.WYSPINNERS.COM

# WEST YORKSHIRE SPINNERS

DBP0134 / WYS98108



Join our Facebook community



UNIT 2, AIREDALE PARK, ROYD INGS AVENUE, KEIGHLEY, WEST YORKSHIRE BD21 4DG  
**(0)1535 664500 SALES@WYSPINNERS.COM WYSPINNERS.COM**